

DSEC-9

Guide to Everything

DSEC9

[Helpful Links](#)

[Waypoints](#)

[DSEC9 Mobs](#)

Elara

[Helpful Links](#)

[Waypoints](#)

[Elara Mobs](#)



Mountain of Madness

[Helpful Links](#)

[Waypoints](#)

[Mountain of Madness Mobs](#)

Welcome to the DSEC9 Guide To Everything.

This guide will help you navigate DSEC9 with ease with helpful links that will take you to the Virtualsense forum, as well as Waypoints that you can copy/paste in game to find what you are looking for.



DSEC9

[Helpful Links](#)

[Waypoints](#)

[DSEC9 Mobs](#)

Helpful Links

Virtualsense Website - <https://virtualsense.eu/>

Virtualsense Forum - <https://www.virtualsense.eu/forum/>

Virtualsense Official Discord - <https://tinyurl.com/yyg456kk>

Virtualsense Media - <https://tinyurl.com/yckvthde>
(Official Storyline & Quarterly Magazine)

DSEC9 Bug Reports - <https://tinyurl.com/46d2xvh3>

DSEC9 Suggestions/Feedback - <https://tinyurl.com/5n8rrk5n>

DSEC9 Beginner Mission Chain Info - <https://tinyurl.com/2s3v25zx>

DSEC9 Upgrading Your Laptop - <https://tinyurl.com/4kmt89h3>

DSEC9 Armor - <https://tinyurl.com/yw54k4ap>

DSEC9 Upgrading Armor - <https://tinyurl.com/4c5kx69z>

DSEC-9/Toulan Crossover Mission - <https://tinyurl.com/25hbj8h>

Steve's Exchange - <https://tinyurl.com/2p8bak62>

Simon's Working Parts Deal - <https://tinyurl.com/bdhkf9ad>

The Lost Otis Plushie - <https://tinyurl.com/45kuta5w>

DSEC9 Codex - <https://tinyurl.com/y2x5sjx9>

DSEC9 Mobs Info - <https://tinyurl.com/55hsznbs>

DSEC9 Synthwave Info - <https://tinyurl.com/55hsznbs>

DSEC9 Damage Types - <https://tinyurl.com/mr2aeacd>

Navigating DSEC9 - <https://tinyurl.com/2btpsdh3>

Mining around DSEC9 - <http://tinyurl.com/22xcxye>



Waypoints

Teleporters

DSEC9 - /wp [DSEC9, 33258, 16853, 145, Waypoint]

Elara Terminus - /wp [DSEC9, 35950, 19991, 105, Waypoint]

Outposts

Alpha Outpost - /wp [DSEC9, 33738, 18615, 102, Waypoint]

Alpha_2 Outpost - /wp [DSEC9, 35473, 18520, 103, Waypoint]

Synthwaves

Synthwave 1 - /wp [DSEC9, 33983, 17203, 103, Waypoint]

Synthwave 2 - /wp [DSEC9, 35839, 18611, 105, Waypoint]

Synthwave 3 - /wp [DSEC9, 34271, 19955, 102, Waypoint]

DSEC9 NPCs

Valeria - /wp [DSEC9, 33280, 16852, 145, Waypoint]

Elara Terminus NPCs

Holoroom - /wp [DSEC9, 36099, 20232, 104, Waypoint]

Pam - /wp [DSEC9, 36136, 20236, 102, Waypoint]

Steve the Engineer - /wp [DSEC9, 35884, 19952, 104, Waypoint]

Simon (Daily Mission/Mining Research Missions) - /wp [DSEC9, 35914, 19981, 105, Waypoint]

Hacked Otis - /wp [DSEC9, 36293, 19961, 106, Waypoint]

The Lost Otis Plushie - /wp [DSEC9, 36253, 19838, 106, Waypoint]

Derelict's Cave Location -- /wp [DSEC9, 35263, 19120, 152, Waypoint]

Other NPCs

These NPCs are inside building on the top floor. Use the televisor.

They are part of the DSEC9 beginner mission chain.

Tony - /wp [DSEC9, 33313, 16857, 144, Waypoint]

Fred - /wp [DSEC9, 33740, 18622, 103, Waypoint]

John - /wp [DSEC9, 35482, 18526, 103, Waypoint]

Paul - /wp [DSEC9, 35929, 20061, 105, Waypoint]

Entrance to Elara -

(Tele-Pod) - /wp [DSEC9, 35140, 20357, 104, Waypoint]

DSEC9 Mobs

DSEC BOT CB



Dmg Type --> 100% Electric

[Other Info](#)

DSEC TALUS DHR



Dmg Type --> 52% Electric -- 48% Acid

[Other Info](#)

DSEC FURY THR



Dmg Type -->Electric -- Acid
-- Cold

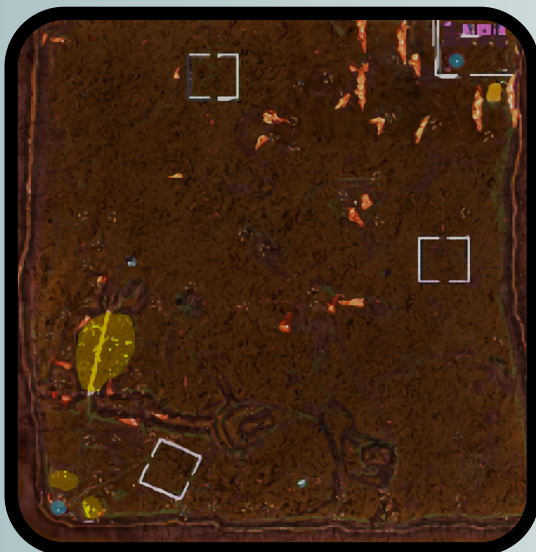
[Other Info](#)

DSEC OTIS



Dmg Type -->37% Burn -- 37% Impact
-- 26% Shrapnel

[Other Info](#)



DSEC OTIS Commander



L1141

**Spawns once a day, check system tab to
see when he has been sighted**

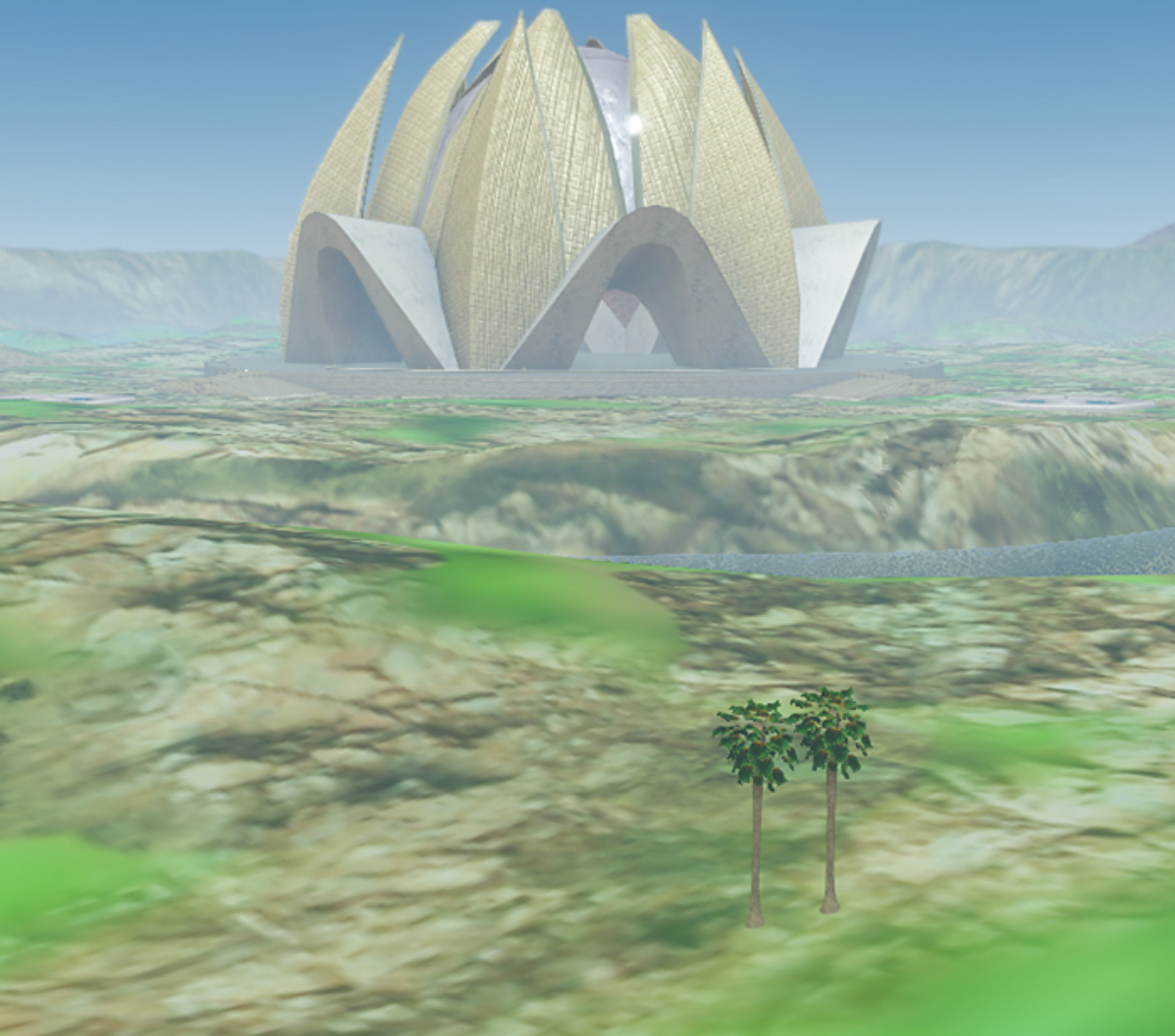
/wp [DSEC9, 35251, 19033, 206, Waypoint]

Elara

[Helpful Links](#)

[Waypoints](#)

[Elara Mobs](#)



Helpful Links

Virtualsense Website - <https://virtualsense.eu/>

Virtualsense Forum - <https://www.virtualsense.eu/forum/>

Virtualsense Official Discord - <https://tinyurl.com/yyg456kk>

Virtualsense Media - <https://tinyurl.com/yckvthde>
(Official Storyline & Quarterly Magazine)

Navigating DSEC9 - <https://tinyurl.com/2btpsdh3>

Mining around DSEC9 - <http://tinyurl.com/22xcxye>

DSEC9 Elara - Bug Reports - <https://tinyurl.com/3s7ahdrw>

DSEC9 Elara - Suggestions/Feedback - <https://tinyurl.com/y3rmymmx>

Elara Mobs Info - <https://tinyurl.com/2p9vecxn>

Elara Codex - <https://tinyurl.com/7w8nm37m>

Lotus Armor - <https://tinyurl.com/3rsr4kp3>

Lotus Armor Plate - <https://tinyurl.com/5eyjnr2>



Waypoints

Teleporter

The Lotus - /wp [DSEC9, 34842, 22136, 133, Waypoint]

Outpost

Outpost 1 - /wp [DSEC9, 35203, 20694, 109, Waypoint]

Outpost 2 - /wp [DSEC9, 36307, 23283, 101, Waypoint]

Instances

Use the televisor to go to floor 1.

Lotus Blue Solo - /wp [DSEC9, 34757, 22150, 226, Waypoint]

Lotus Green Team - /wp [DSEC9, 34756, 22162, 123, Waypoint]

Lotus Black Solo - /wp [DSEC9, 34807, 22078, 122, Waypoint]

Lotus Red Team - /wp [DSEC9, 34796, 22082, 122, Waypoint]

Lotus Brown Solo - /wp [DSEC9, 34793, 22222, 124, Waypoint]

Lotus Silver Team - /wp [DSEC9, 34805, 22228, 124, Waypoint]

Lotus Gold Solo - /wp [DSEC9, 34922, 22158, 123, Waypoint]

Lotus Gold Team - /wp [DSEC9, 34923, 22145, 123, Waypoint]

NPC Waypoints

Lord Synial (Gold Instances) - /wp [DSEC9, 34922, 22151, 123, Waypoint]

Corbite Key Technician - /wp [DSEC9, 34900, 22080, 121, Waypoint]

Entrance to Mountain of Madness -

(Teleportation Device) - /wp [DSEC9, 36428, 23447, 107, Waypoint]

Elara Mobs

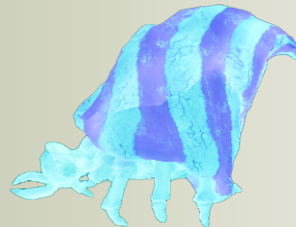
Lotus Invader



Dmg Type --> Electric - Cold - Penetration
- Burn

[Other Info](#)

Caboria Ancient



Dmg Type --> Cold - Electric - Acid

[Other Info](#)



Wahesh Hatchling



Dmg Type --> Acid - Electric

[Other Info](#)



Mountain of Madness

[Helpful Links](#)

[Waypoints](#)

[Mountain of Madness Mobs](#)



Helpful Links

Virtualsense Website - <https://virtualsense.eu/>

Virtualsense Forum - <https://www.virtualsense.eu/forum/>

Virtualsense Official Discord - <https://tinyurl.com/yyg456kk>

Virtualsense Media - <https://tinyurl.com/yckvthde>
(Official Storyline & Quarterly Magazine)

Navigating DSEC9 - <https://tinyurl.com/2btpsdh3>

Mining around DSEC9 - <http://tinyurl.com/22xcxxye>

DSEC9 Mountain of Madness Bug Reports - <https://tinyurl.com/2s37hbw9>

DSEC9 Mountain of Madness Suggestions/Feedback - <https://tinyurl.com/26xnsbw>

A Stranger in the Woods (Beginning Mission) - <https://tinyurl.com/u76y5khhb>

Join The Elder Gods (The Order of the Elder Gods Suit) - <https://tinyurl.com/2tac66f2>

Prove Yourself to the Order (The Shub Spine) - <https://tinyurl.com/2s4esyv2>

Clear The Path (2 PED Universal Ammo Daily) - <https://tinyurl.com/sezytwby>

Elder Shrine (Repeatable Texture Blueprints Mission) - <https://tinyurl.com/3skt74cs>

Cultist in Training (Repeatable 1 PED Universal Ammo Daily) - <https://tinyurl.com/4cy2b5tv>

Worship the Elder Gods (Elder Robe) - <http://tinyurl.com/3t8v2pv5>

Dynamic Event 1 - Defend the Shrine - <https://tinyurl.com/5yp5ytzu>

Dynamic Event 2 - Tekeli-Li Tekeli-Li Tekeli-Li - <https://tinyurl.com/ytdfdmr5>

Dynamic Event 3 - Niolir's Burrow - <https://tinyurl.com/45n9ruk4>

Dynamic Event 4 - Ghreldelb Lair - <https://tinyurl.com/ssbk232h>

Dynamic Event 5 - Pyramid of Shut'thend - <https://tinyurl.com/4bxwjrpj>

Mountain of Madness Mobs Info - <https://tinyurl.com/2p88xddj>

Mountain of Madness Blueprints Info - <https://tinyurl.com/3x6vhytc>

Mountain of Madness Items Info - <https://tinyurl.com/5dm7kvfe>

Mountain of Madness Codex - <https://tinyurl.com/7w8nm37m>



Waypoints

Teleporters

Outside the Mountain

Larches Green - /wp [DSEC9, 38123, 23647, 105, Waypoint]

Inside the Mountain

You will have to fight your way through the mobs to collect these teleporters. No vehicles or teleport chips allowed in this area.

The Mountain of Madness - /wp [DSEC9, 38946, 21528, 347, Waypoint]

Shogghols Nest - /wp [DSEC9, 38336, 20971, 130, Waypoint]

Niilir's Burrow - /wp [DSEC9, 39519, 20442, 130, Waypoint]

Ghreldeb Lair - /wp [DSEC9, 38634, 20078, 312, Waypoint]

Shub Tegunestene Chamber - /wp [DSEC9, 38320, 19605, 131, Waypoint]

The Pyramid of Shut'thend - /wp [DSEC9, 38833, 19118, 130, Waypoint]

NPC Waypoints

A Stranger in the Woods - /wp [DSEC9, 36754, 23522, 104, Waypoint]

Old Man - /wp [DSEC9, 37498, 23894, 108, Waypoint]

Elder Shrine (Inside Church) - /wp [DSEC9, 38078, 23930, 105, Waypoint]

ShadowDragonV - /wp [DSEC9, 38059, 23875, 101, Waypoint]

Count Cristo - /wp [DSEC9, 38946, 21438, 340, Waypoint]

Meister Sith - /wp [DSEC9, 39549, 20478, 130, Waypoint]

The Black Knight - /wp [DSEC9, 38641, 20104, 313, Waypoint]

Dynamic Events

Dynamic Event 1 - Defend the Shrine - /wp [DSEC9, 37921, 24038, 102, Waypoint]

Dynamic Event 2 - Tekeli-Li Tekeli-Li Tekeli-Li - /wp [DSEC9, 38946, 21438, 340, Waypoint]

Dynamic Event 3 - Niilir's Burrow - /wp [DSEC9, 39549, 20478, 130, Waypoint]

Dynamic Event 4 - Ghreldeb Lair - /wp [DSEC9, 38641, 20104, 313, Waypoint]

Dynamic Event 5 - The Pyramid of Shut'thend - /wp [DSEC9, 38932, 18923, 130, Waypoint]

Mountain of Madness Mobs

Shogghols



[Dynamic Event 2](#)

Dmg Type --> Impact -- Cut

[Inside Mountain Mob Info](#)

[Outside Mountain Mob Info](#)

Zokaraneus



[Dynamic Event 3](#)

Dmg Type --> Burn -- Impact

[Inside Mountain Mob Info](#)

[Outside Mountain Mob Info](#)

Cult of Shut'thend



[Dynamic Event 1](#)

Dmg Type --> Penetration -- Impact -- Cut --
Stab

[Inside Mountain Mob Info](#)

[Outside Mountain Mob Info](#)

Tegunestene



[Dynamic Event 4](#)

Dmg Type --> Impact -- Penetration -- Burn

[Inside Mountain Mob Info](#)

[Outside Mountain Mob Info](#)

Spawn of Cthylla



ONLY in [Dynamic Event 5](#)

Dmg Type --> Stab -- Impact -- Cut -- Cold

Cthylla



ONLY in [Dynamic Event 5](#)

Dmg Type --> -- Impact -- Cut -- Cold

DSEC9 is Monria's expansion dimension but it is located on the Planet Toulán server to allow for full control of content development. It is comprised of three separate map sections, each with its own theme, but all, including Monria and Toulán, are connected through official lore.

The first map section referred to as DSEC9 is an automated mining outpost originally operated by the DSEC mining corporation of Monria. It is now controlled by DEC (Detached Ego Consciousness) who overthrew his creators who were using him and artificial intelligence to control the local fauna.



ELARA is the second map section that reveals the Lotus Temple. The temple is sacred to HM Queen Nara as it is part of her homeland. There are Lotus Invaders attempting to take over the temple, and it is dire that the temple be protected at all costs. The Lotus Temple instances provide a variety of challenges.

MOUNTAIN OF MADNESS is the third and final map section and very much entrenched in the Monria Cthulhu Mythos-themed official lore. The village of Larches Green was inspired by historical lore and the great exodus from Teaksbury on Earth by Decca, Leader of the Cult of Shut'thend, who has a specific agenda to take back control of Monria, and extend that control to DSEC9 and Planet Toulán. The focus of the dynamic events is to encourage group play and team work toward gaining rewards.